



**GLOBAL
EDUCATION**



*PTC NSW in partnership with AusAID to support the
integration of a global perspective
across the curriculum*

NSW GLOBAL EDUCATION PROJECT

- managed by Professional Teachers' Council NSW
- funded by AusAID
- integrate global education across the curriculum



**GLOBAL
EDUCATION**

*PTC NSW in partnership with AusAID to support the
integration of a global perspective
across the curriculum*

What is global education?

- Global education is a way of broadening the outlook of students so they become more **active, involved citizens** who can make **sense of their world.**
- Cross-disciplinary



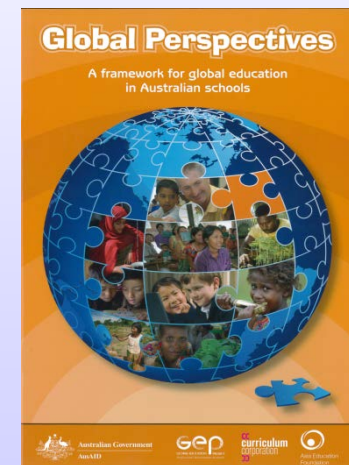
**GLOBAL
EDUCATION**

*PTC NSW in partnership with AusAID to support the
integration of a global perspective
across the curriculum*



Five learning emphases – or recurring themes

1. interdependence and globalisation
2. identity and cultural diversity
3. social justice and human rights
4. peace building and conflict resolution
5. sustainable futures





**GLOBAL
EDUCATION**



*PTC NSW in partnership with AusAID to support the
integration of a global perspective
across the curriculum*

Resources

- GE developed
- GE co-developed resources
- AusAid developed



**GLOBAL
EDUCATION**

*PTC NSW in partnership with AusAID to support the
integration of a global perspective
across the curriculum*

Global Education developed and published resources

Global Education website

- Global Education *why?*
- Teaching and Learning *Australian Curriculum*
- Global issues *country profiles*
case studies
global issues expanded



**GLOBAL
EDUCATION**

*PTC NSW in partnership with AusAID to support the
integration of a global perspective
across the curriculum*

The BEST bit!

Resources gallery – images

videos

teaching activities

publications

templates

links



**GLOBAL
EDUCATION**

*PTC NSW in partnership with AusAID to support the
integration of a global perspective
across the curriculum*

Images - photo literacy

Key geographical questions -

What? Where? Why? How?





**GLOBAL
EDUCATION**

*PTC NSW in partnership with AusAID to support the
integration of a global perspective
across the curriculum*

Teaching activities

Year 7 Unit 1 Water

Year 7 Unit 1 and Year 8 Unit 1
Natural disasters

Year 8 Unit 2 Urbanisation

Year 9 Unit 1 Food security
Rice
Rural development

Year 9 Unit 2 Globalisation



**GLOBAL
EDUCATION**

*PTC NSW in partnership with AusAID to support the
integration of a global perspective
across the curriculum*

- Year 10 Unit 1** Environment
Desertification

- Year 10 Unit 2** Australia's aid program
Education
Gender
Health
HIV/AIDS
Human Rights
Microfinance
Poverty Reduction
Sanitation
Water
Volunteering



**GLOBAL
EDUCATION**

PTC NSW in partnership with AusAID to support the integration of a global perspective across the curriculum

Foundation	Year 1	Year 2	
People live in places <i>(Focus on local area)</i>	Places have distinctive features <i>(Focus – local-global)</i>	People are connected to many places <i>(Focus: countries of the Asia region)</i>	
Year 3	Year 4	Year 5	Year 6
Places are both similar and different <i>(Focus: Australia's neighbouring countries)</i>	The Earth's environment sustains all life <i>(Focus – Africa and South America)</i>	Factors that shape the human and environmental characteristics of places <i>(Focus - Europe and North America)</i>	A diverse and connected world <i>(Focus - World and Major countries of the Asia Region)</i>
Year 7	Year 8	Year 9	Year 10
Unit 1 Water in the World	Unit 1 Landforms and Landscapes	Unit 1 Biomes and Food Security	Unit 1 Environmental change and management
Unit 2 Places and Liveability	Unit 2 Changing Nations	Unit 2 Geographies of Interconnections	Unit 2 Geographies of human wellbeing



**GLOBAL
EDUCATION**

*PTC NSW in partnership with AusAID to support the
integration of a global perspective
across the curriculum*



Web quests

Year 9 Unit 1 FOOD SECURITY – sustainability of prawn farming in Asia and Australia

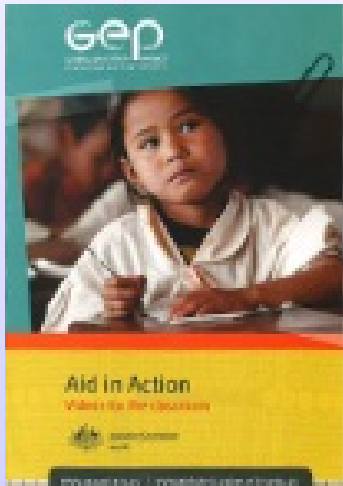
Year 9 Unit 2 GLOBALISATION - use of factory labour from the point of view of one of the 'players' in the production of clothing and footwear.

Year 10 Unit 1 DESERTIFICATION - the creeping desert sands in the west of Inner Mongolia, China, taking on the role of Mongolian herders, environmentalists, government officials, mining companies and tourism companies.



Publications – examples

DVD's - Aid in action



Year 7

1. Water – Vietnam

Year 8

1. Aceh – Response to Disasters

Year 10

1. Eye surgery and health – Solomon Islands
2. HIV/AIDs – PNG and South Africa (John Eales and Mal Meninga)
3. Landmines – Problem and Rehabilitation
4. Volunteering

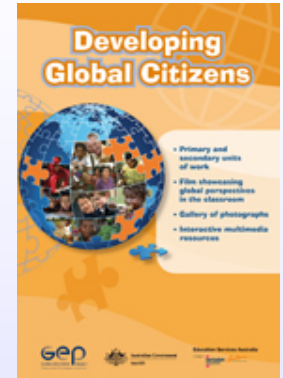
Teachers notes and student activities



**GLOBAL
EDUCATION**

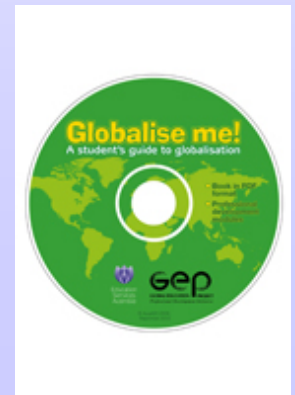
PTC NSW in partnership with AusAID to support the integration of a global perspective across the curriculum

1. Developing Global Citizens Stages 4 & 5, all KLAs. CD



2. Go Global: Global Perspectives in the Secondary Classroom

3. Globalise Me! A Student's Guide to Globalisation





**GLOBAL
EDUCATION**



*PTC NSW in partnership with AusAID to support the
integration of a global perspective
across the curriculum*

<http://www.globaleducation.edu.au>



**GLOBAL
EDUCATION**



*PTC NSW in partnership with AusAID to support the
integration of a global perspective
across the curriculum*

Teaching templates

[http://www.globaleducation.edu.au/re
sources-gallery/resource-gallery-
templates.html](http://www.globaleducation.edu.au/resources-gallery/resource-gallery-templates.html)



**GLOBAL
EDUCATION**

*PTC NSW in partnership with AusAID to support the
integration of a global perspective
across the curriculum*

AusAid publication

Focus magazine

- Indonesia
- Education
- Effective Aid
- Humanitarian Aid

<http://www.aid.gov.au/Flipbook/files/31.html>



**GLOBAL
EDUCATION**



*PTC NSW in partnership with AusAID to support the
integration of a global perspective
across the curriculum*

Global Education Project NSW

http://www.ptc.nsw.edu.au/content_common/pg-globaled-resources.seo



**GLOBAL
EDUCATION**

*PTC NSW in partnership with AusAID to support the
integration of a global perspective
across the curriculum*



**For further information, professional learning and
support jennifer.curtis@ptc.nsw.edu.au**